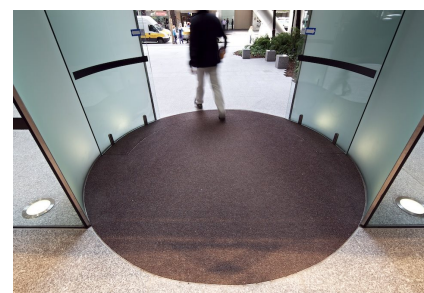
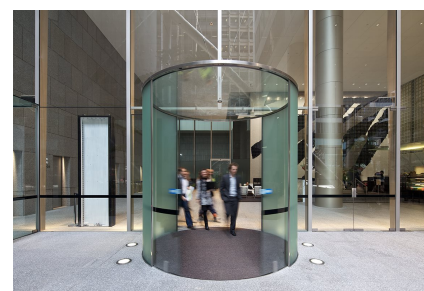


9 Castlereagh Street, Sydney

Тематическое исследование



Originally completed in 1989, the Harry Seidler designed landmark office tower at 9 Castlereagh Street undertook a significant upgrade to the lobby entry 20 years later after being acquired by the Stockland Property Group.

The unique glass vaulted roof and surrounding gardens were replaced with a grand frameless glass lobby facade spanning across the full width of the site and for the main entrance a curved glass sliding door system was selected to provide a striking yet practical entrance to the lobby, capable of meeting disabled access and emergency egress requirements.

record Automatic Doors was selected to custom design and build the unique glass roof entrance with a single roof panel of 21.52mm toughened laminated glass supported in the middle by a tensile stainless steel rod braced back to the mullion above the door.

The record RST 20 curved sliding door operator was mounted within a cutout in the concrete slab provided by the builder with the top of the curved sliding door panels supported at the head by a fabricated stainless steel door track. The curved stainless steel box section around the perimeter roof not only acts to support the glass roof but also conceal the activation and safety sensors.

9 Castlereagh Street, Sydney

Тематическое исследование



9 Castlereagh Street, Sydney

Тематическое исследование



9 Castlereagh Street, Sydney

Тематическое исследование



9 Castlereagh Street, Sydney

Тематическое исследование

