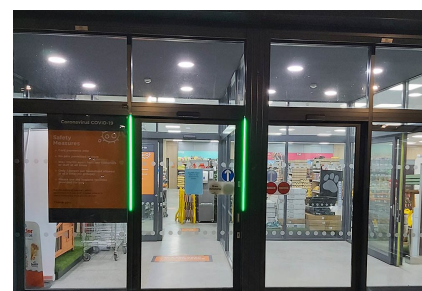
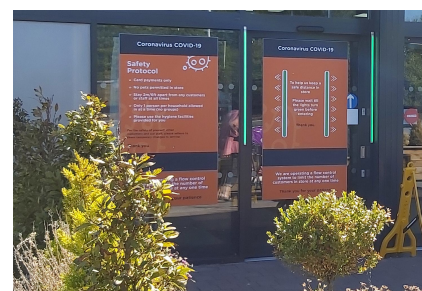


record FlowControl at PetPlace

Riferimento



Award-winning retailer PetPlace offers a range of products from healthcare and food items to workwear, bedding, nutritional supplements, and equine goods.

A growing, passionate business, the company also provides services including dog washing and grooming, and even a revolutionary dog play park, coffee shop and cinema.

With other stores in Ruthin, Chirk, Llangefni and Mold, and a headquarters in Mochdre, the business continued to operate safely and successfully during the Coronavirus lockdown, scaling-up its click and collect facility and posting a 600% increase in online orders.

The Brief

Before re-opening the Abergele store, PetPlace considered a number of solutions and different measures to ensure they were Covid-19 secure, to protect both customers and staff whilst providing reassurance and peace of mind that all new procedures facilitated safe social distancing.

The Solution

record's FlowControl system was installed on PetPlace's automatic sliding entrance door to control the number of customers entering the store.

Whilst the visible surface mounted green and red LED stripes which clearly identify if entry is allowed or denied appealed to PetPlace, the ability to automatically deactivate the entrance door once the pre-defined people count is reached was a deciding factor, as it prevents further access until a customer exits the building.

This has enabled PetPlace to safely redeploy staff who would have otherwise manned the entrance/exit doors, in the knowledge that customers are accurately counted and allowed access only when it is safe to do so.

The user-friendly system also appealed to the firm, as it can be manually adjusted quickly and easily to suit

record FlowControl at PetPlace

Riferimento

peak/off-peak hours, complying with safety regulations.

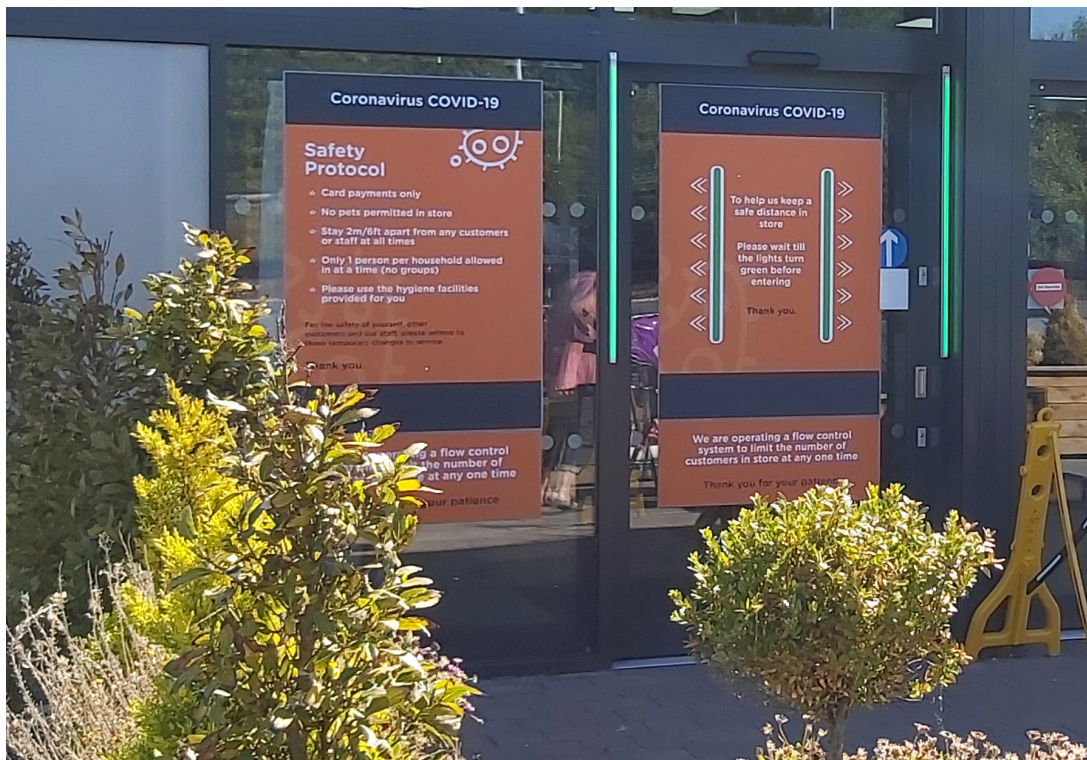
Managing Director Sion Pritchard said: "We are really impressed with how effective and reliable the FlowControl is at counting and limiting the number of customers entering our store, without the need for our staff to intervene.

"Such is the confidence we have in this system that we are rolling the FlowControl out to our other four stores over the next week, to reassure our team and customers that we are following social distancing measures to protect them."

See the FlowControl in action at PetPlace

record FlowControl at PetPlace

Riferimento



record FlowControl at PetPlace

Riferimento

