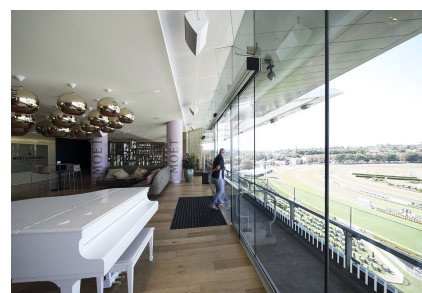
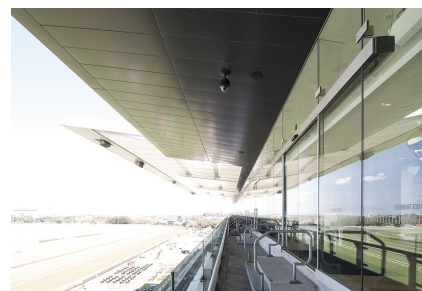
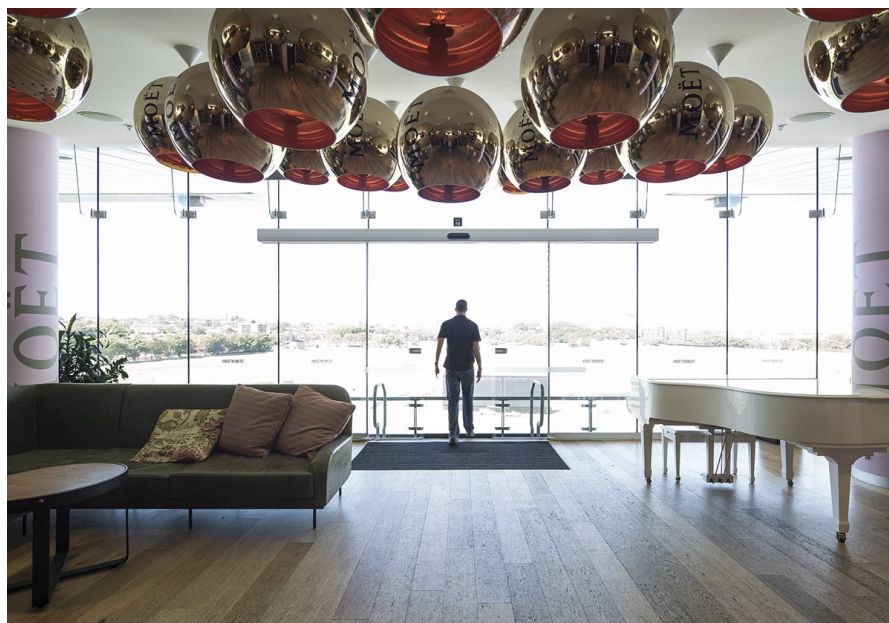


# The Stables @ Royal Randwick

Riferimento



With the existing automatic swing doors to the outdoor terrace of the Moët & Chandon Room, on Level 4 of Royal Randwick Racecourse, unable to operate with the high wind loads of such an exposed location, record Automatic Doors was engaged to provide an alternative solution.

It was clear that instead of swing doors, an automatic sliding door would be a more appropriate entrance system but the main challenge was incorporating the sliding door operator within the existing frameless glass facade. To minimise extension modification to this existing work to accommodate the new operator, record custom designed and fabricated a slimline support framework that was clamped to the existing glass sidelights and highlight.

The STA 20 DUO sliding door operator was selected due to its high capacity motor and track design, needing to support bi-parting door panels 2620mm high x 1300mm wide in 17.52mm toughened laminated glass, coupled with an aesthetically pleasing 160mm high pelmet design to minimise visible disruption from the function room overlooking the racetrack.

Footage of the existing swing door entry can be viewed at the following [Google Maps link](#).

# The Stables @ Royal Randwick

Riferimento





# The Stables @ Royal Randwick

Riferimento

