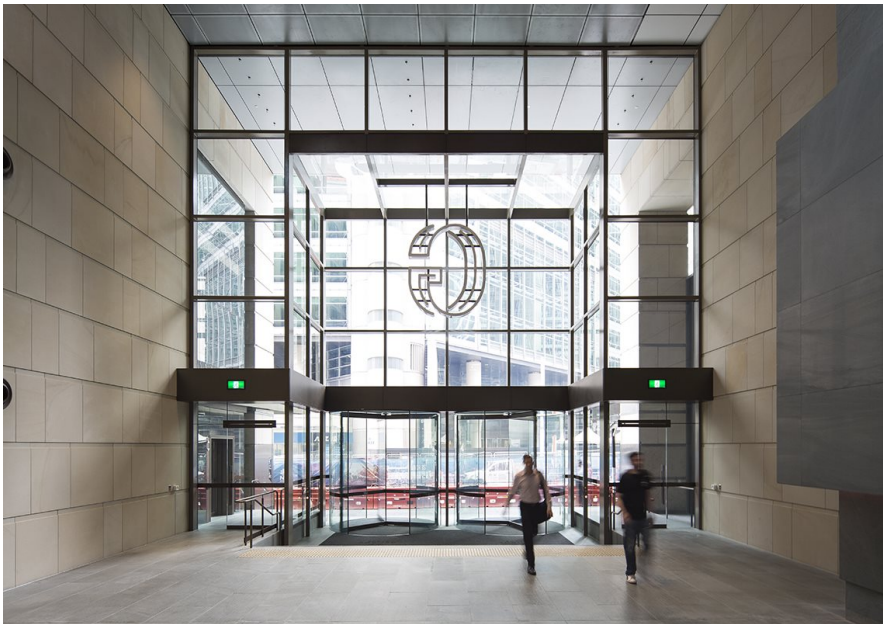


George Place, Sydney

Referencia



The redevelopment of George Place, in the heart of the Sydney CBD, created a super lobby, combining the ground floor levels of 345 and 363 George Street, as well as 24 York Street. The landmark project was designed by Fender Katsalidis Mirams and delivered by FDC, with record Automatic Doors supplying the revolving doors to the George Street entries, as well as automatic sliding doors to other entries.

The Diamond Series revolving doors, 3200mm diameter x 3400mm high, were selected by the architects due to their full frameless glass design allowing them to blend in with the modular framed construction of the surrounding glass assembly and external awning. With the doors positioned directly below the structural beam of this framework, the glass roofs were supplied in low iron laminated glass, with a white dot frit pattern on the lower glass face and a solid white frit on the upper face.

Maintaining the multi-colour lighting theme of the other lobby finishes to the wall and ceiling, LED strip lighting was installed to the edges of the glass roofs to provide coloured accents to the edges with aluminium capping in a medium bronze powdercoat aluminium finish.

The existing concrete slabs were not able to accommodate the drive motors within the floor setdown so record mounted these to the underside, connected via extended drive shafts and accessible via the plant rooms below.

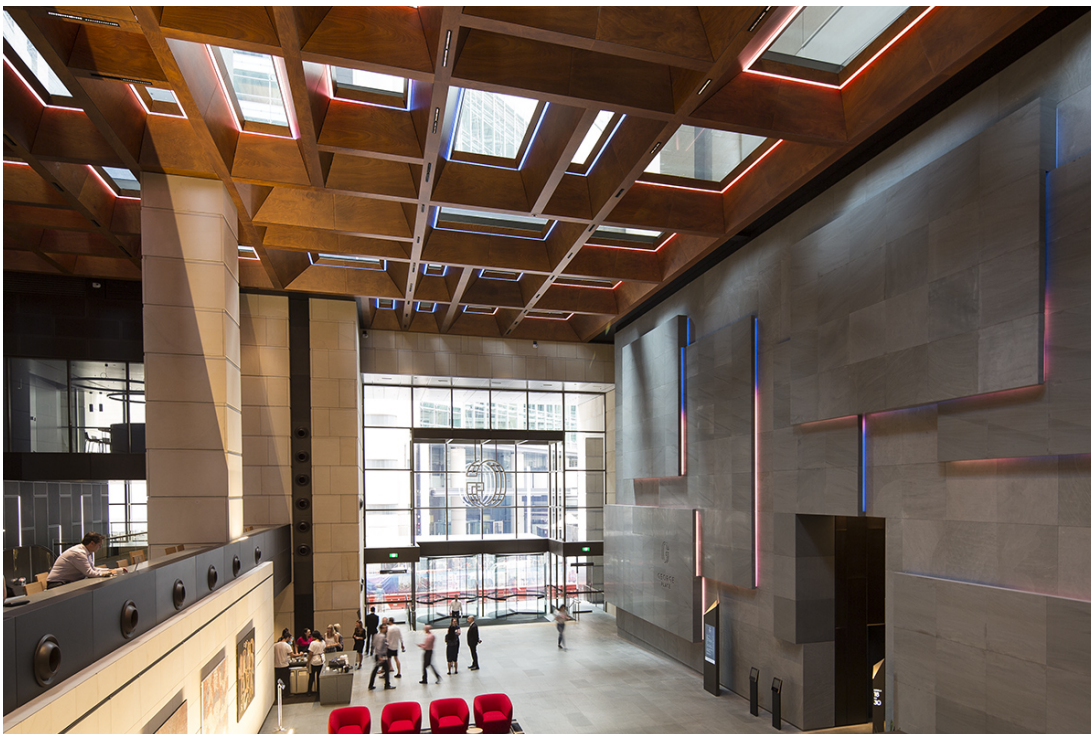
George Place, Sydney

Referencia



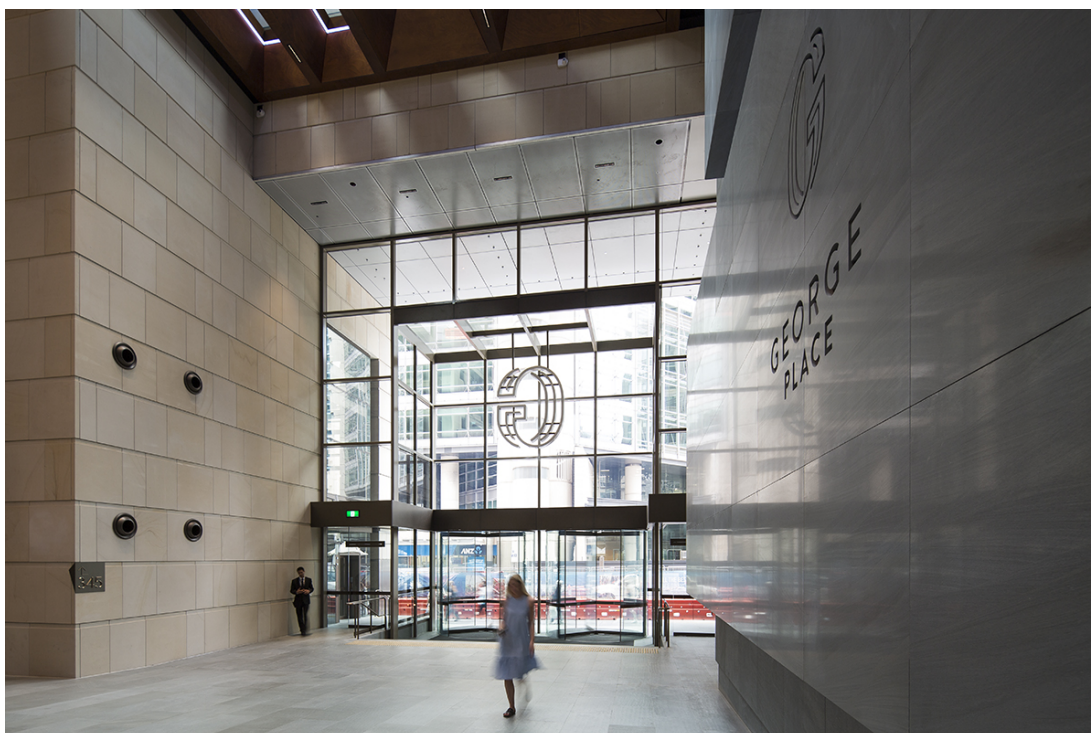
George Place, Sydney

Referencia



George Place, Sydney

Referencia



George Place, Sydney

Referencia

